

[illegible]

2014 Exhibition
Expanding the Vision of Printmaking
CENTRAL BOOKING Gallery | OffLINE Space | New York, NY

“Pushing The Limits” is a significant exhibition showing a wide range of artists who welcome the adventure of risk-taking. Thirty-six pieces by thirty artists represent various disciplines demonstrating originality, aptitude, and above all, a passion for going beyond tradition.

By expanding on the context in which printmaking is typically viewed, this show celebrates the versatile contemporary print practices happening today with the use of Akua Inks.

Susan Rostow
Inventor of Akua Inks

An artist phoned me after reading the call for this exhibition in order to tell me that it made her think and inspired her to push her prints into new directions, beyond the conventional print on paper. This was the intent, to encourage artists who experiment with unusual concepts, surfaces, and objects, utilizing the possibilities Akua Inks can offer in combination with all kinds of media. After all, if we trace back to the sources of those traditions that have become imbedded, we will find innovators.

Maddy Rosenberg
Executive Director and Curator of CENTRAL BOOKING Gallery

Maddy Rosenberg
Juror

Susan Rostow
Exhibition Coordinator

Christina Pumo
Assistant Exhibition Coordinator, Catalog Design

Speedball Art Products
Sponsor



ARTISTS

- | | |
|-------|---|
| 1 | Randy Garber Melanie Yazzie |
| 2 | Bonnie Baker Carrie Ann Plank |
| 3 | Tekla McInerney |
| 4 | Cynthia Back Indrani Nayar Gall |
| 5 | So Yoon Lym |
| 6 | Matt Ellis Mary Kostman |
| 7 | Jaune Quick-to-See Smith Brenda Malkinson |
| 8 | Kirsten Flaherty |
| 9 | Jane Geard Catherine Kernan |
| 10 | Meejin Hong Susan Rostow |
| 11 | Bernice Cross Joshua Tollefson |
| 12 | Dan Welden Melody Leary |
| 13 | Meredith Dean Beth Atkinson |
| 14 | Joyce Silverstone |
| 15-16 | Neal Ambrose Smith |
| 17 | Nancy Langston |
| 18 | Izumi Yuu Ueda |
| 19 | Sumi Perera Christine Stoughton |
| 20 | Jeffrey K. Fisher |



Randy Garber
Listening: What You Already Know
 Multi-plate intaglio with copper
 tubing
 15" x 32"



Melanie Yazzie
Counting
 Monotype with guache
 18" x 14"



Bonnie Baker
Confluence
 Polymer plate etching
 22" x 30"



Carrie Ann Plank
Uffe Luege Abe Luege
 Letterpress, intaglio, relief in an accordion structure
 6" x 13" x 1" (closed) , 6" x 130" x 1" (open)

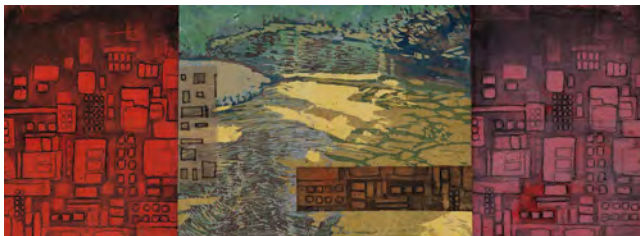


Tekla McInerney

The View From Drowning 1, #1 from a suite of 3 prints

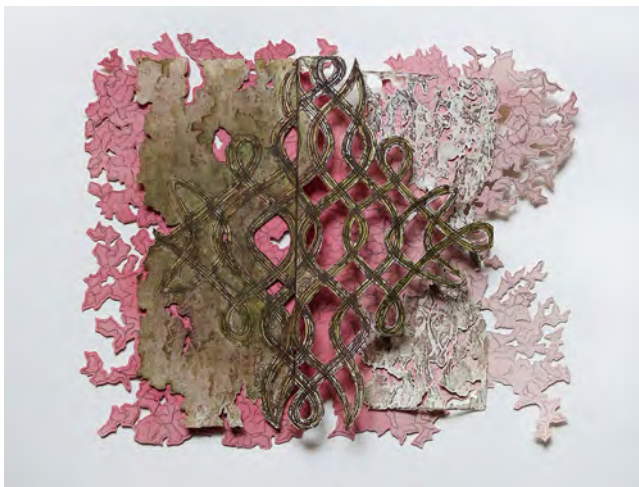
Drypoint, type written text

5.875" x 3.875"



Cynthia Back
Encroachment

Reduction woodcut, deep bite, aquatint, chine collé
8" x 22"



Indrani Nayar-Gall
Decoding IA

Intaglio, trace print, cutting
10.5" x 12.5" x 5"



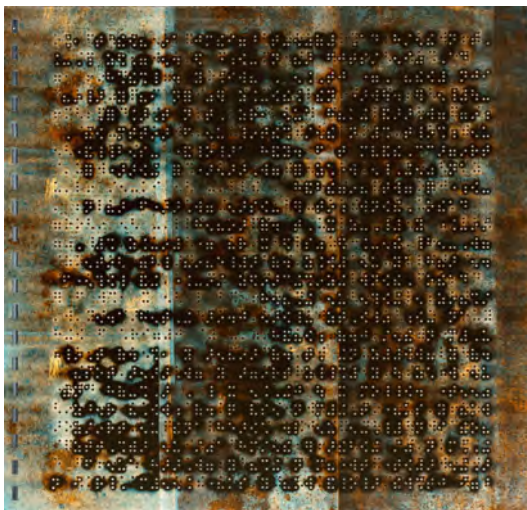
So Yoon Lym
James: Solar Etched
 Solar etched print
 10" x 8"



So Yoon Lym
Mario II: Solar Etched
 Solar etched print
 10" x 8"



Matt Ellis
Keith III
 Intaglio and chine collé
 6" x 6"



Mary Kostman
Inaudible Image
 Monoprint, photograph
 12" x 12"



Jaune Quick-to-See Smith
Good Government
 Inverse intaglio-type
 19" x 15"



Brenda Malkinson
September Twenty Second
 Woodblock
 7" x 5"



Kirsten Flaherty
Spider Monkey
Etching and aquatint
9" x 6"



Jane Geard
The Ensemble
 Collagraph relief on mulberry
 56" x 25"



Catherine Kernan
Tracings #131
 Woodcut monoprint
 16" x 10"



Meejin Hong
Soil
 Animation, Akua Ink on glass



Susan Rostow
Controlling Motion
 Mixed media
 20" x 20" x 20"



Bernice Cross
A Different Scale
 Four plate intaglio-type
 11" x 17"



Joshua Tollefson
Face Cards
 Intaglio
 34" x 26"



Dan Welden
Sandy
 Solarplate intaglio
 17" x 20"



Melody Leary
Second Skin
 Solarplate intaglio, machine stitching, watercolor,
 metal eyelets and ribbon
 6" x 18"



Meredith Dean
Satx Tondoi
 Relief, epoxy, wood
 19" x 15"



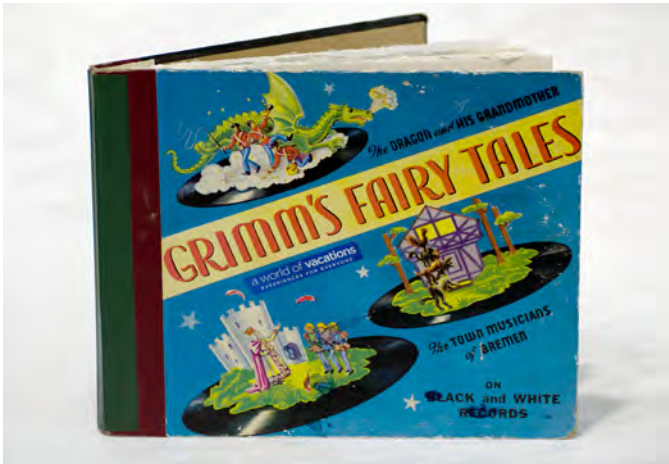
Beth Atkinson
Flow
 Book structure with monotype and colored pencil
 6" x 4" x 24" (open)



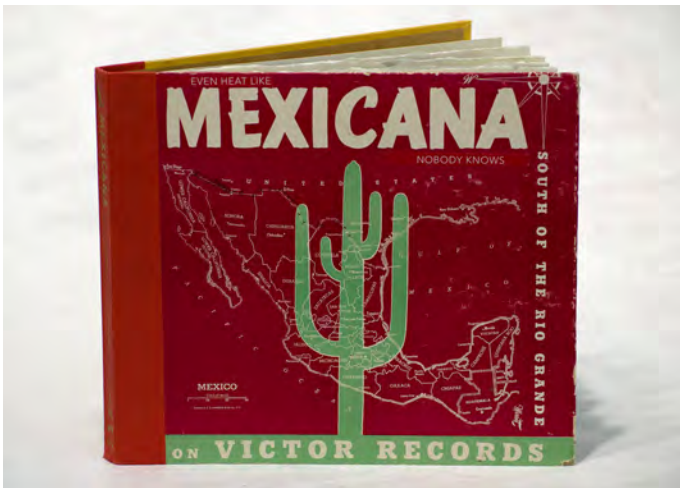
Joyce Silverstone
Shift
Relief, monotype, collage
24" x 15"



Neal Ambrose Smith
Concert Under the Stars
 Inverse intaglio-type, Xerox transfer
 35" x 22"



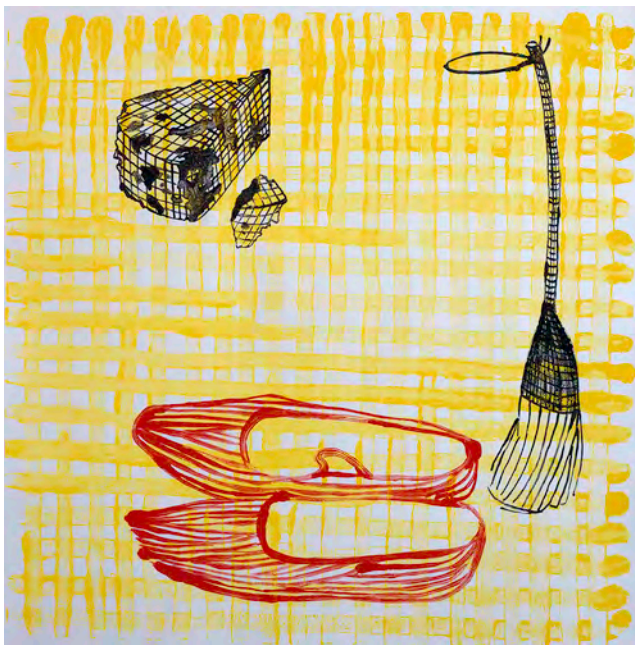
Neal Ambrose Smith
Grimm's Fairy Tales, A World of Vacations
 Mixed media
 10.5" x 12" x .75" (closed)



Neal Ambrose Smith
Even Heat Like Mexicana, Nobody Knows
 Mixed media
 10.5" x 12" x .75" (closed)



Nancy Langston
Head High and Glass
Rice paper on surfboard, mod podge, varnish
66" x 20" x 2"



Izumi Yuu Ueda
Okomota
 Monoprint
 20" x 20"



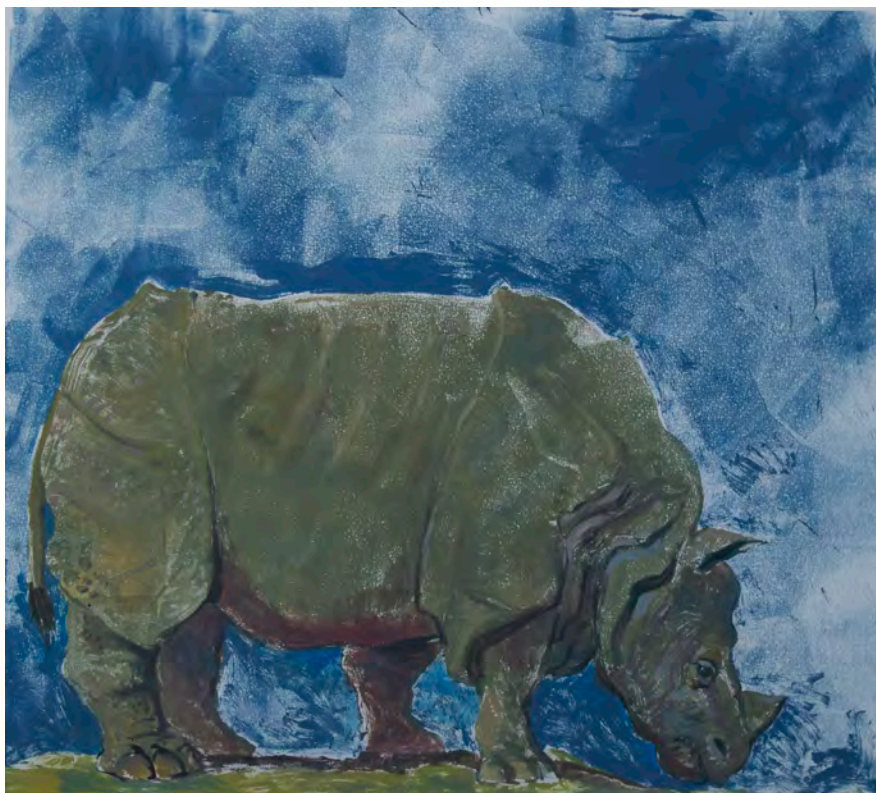
Izumi Yuu Ueda
On Your Toes
 Itajime shibori on caste paper
 10" x 48" x 4"



Sumi Perera
Think Outside the Building Blocks X
 Relief embossed print from cut
 card
 4" x 6" (each box, closed)



Christine Stoughton
Liquid Light
 Recycled prints on mulberry, paper pulp,
 chicken wire
 Dimensions variable



Jeffrey K. Fisher
Rhinoceros Unicornis
Monotype
18" x 20"



Proud Sponsor of “Pushing The Limits” 2014 Exhibition

Speedball Art Products

2301 Speedball Road, Statesville, NC 28677

Tel: (800) 898.7224 | Fax: (704) 838.1472

www.AkuaInks.com | customerservice@speedballart.com

© 2014 by Speedball Art Products, LLC. All rights reserved. This catalog may only be reproduced with the expressed written consent of Speedball Art Products, LLC.