

Trace Monotype: Do at Home Drawing/Printmaking Hybrid

amyen@mac.com

What might you have in common with Klee and Gauguin? Both were enchanted with trace monotype, a hybrid of drawing and printmaking. In this easy, accessible process, paper is positioned over an inked plate allowing the artist to draw on the backside of the paper with a variety of tools while creating a mirror image on the opposite side. Transfers reveal a rich, expressive line with subtle marks unique to the process.

In order to add color to our work we will be using the CMYK printing process. CMYK stands for "Cyan, Magenta, Yellow and Black." These are the four basic colors used for printing color images. In commercial printmaking, transparent base is added to alter the percentage of the pigment needed for creating a full spectrum of color. In this workshop we will not be mixing in transparent base to adjust our range. In this lesson we will be using equivalent Akua Intaglio

Supplies:

Speedball Mulberry Paper 9" x 12" or copy paper

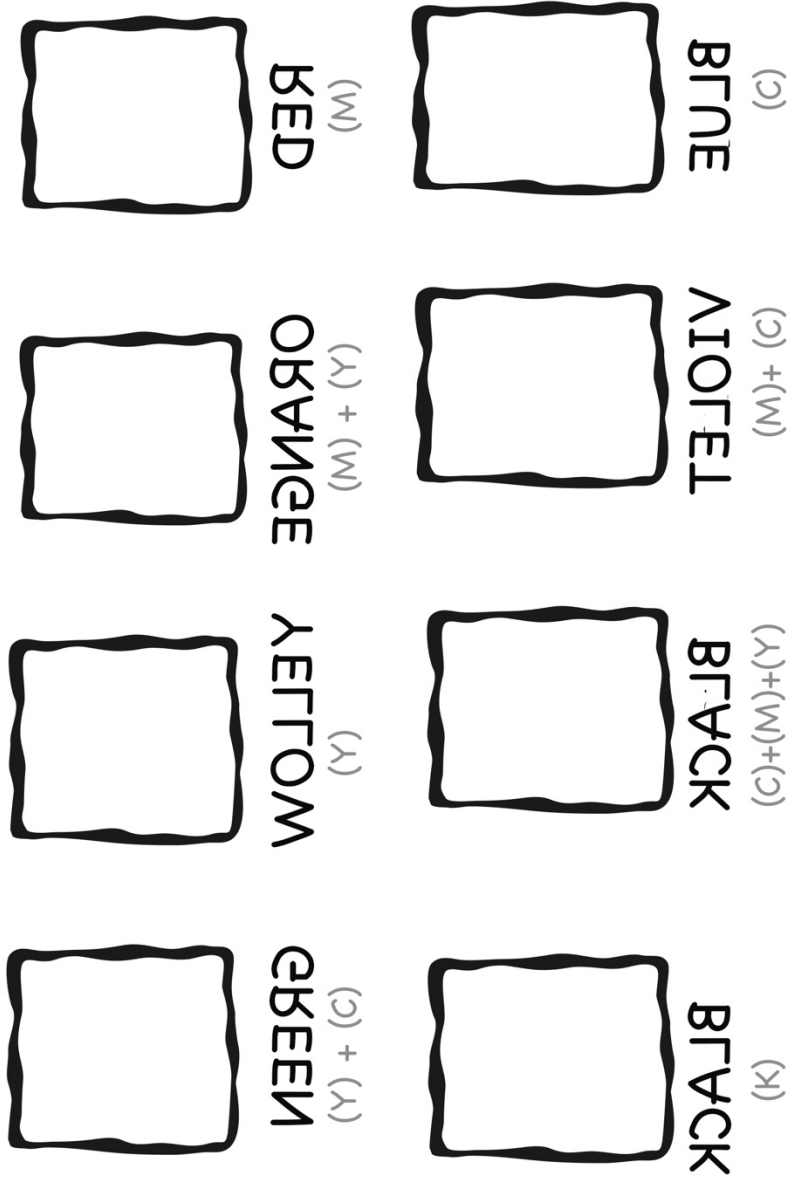
Speedball Brayer

Akua Intaglio Inks: Phthalo Blue , Q Magenta, H Yellow and Carbon Black Plexi Plates or flat surface for rolling ink.

Colored Pencils or assorted pencils to designate the C, M, Y, K (This helps to keep track of what colors have been applied)

- Phthalo Blue = (C) Cyan
- Q. Magenta = (M)Magenta
- Hansa Yellow = (Y) Yellow
- Carbon Black = (K) Black

1. Student Prints AKUA TRACE MONO TEMPLATE or uses file to reproduce a hand draw facsimile reversing the color titles.
2. Student position paper over plate **lightly** inked with Yellow. . (Tip: The ink should be lightly applied to the plate. **Avoid over inking the plate!**)
3. Using yellow pencil trace everything that should appear yellow (yellow square, orange square, green square and CMY square and the color's title beneath the box.
4. Repeat using Magenta using a red pencil or colored pencil designated for red
5. Repeat using Phthalo using a blue pencil or colored pencil designated for Cyan
6. Repeat using Carbon Black, if available.
7. Student photographs work and shares.
8. Student composes their own drawing and creates a CMYK trace monotype using the above process.



CMYK TRACE MONOTYPE USING AKUA PHTHALO BLUE (C)
Q.MAGENTA (M)
H. YELLOW (Y)
CARBON BLK (K)



Rolled up Ink on sheet of heavy mylar with template placed on top



Light roll up of magenta for second application of color



Light roll up of Phthalo (Cyan) for final layer. (NO CARBON BLACK INK AVAILABLE FOR THIS DEMO)



Finished Trace Monotype
Akua "CMYK) Sampler

Student work

