

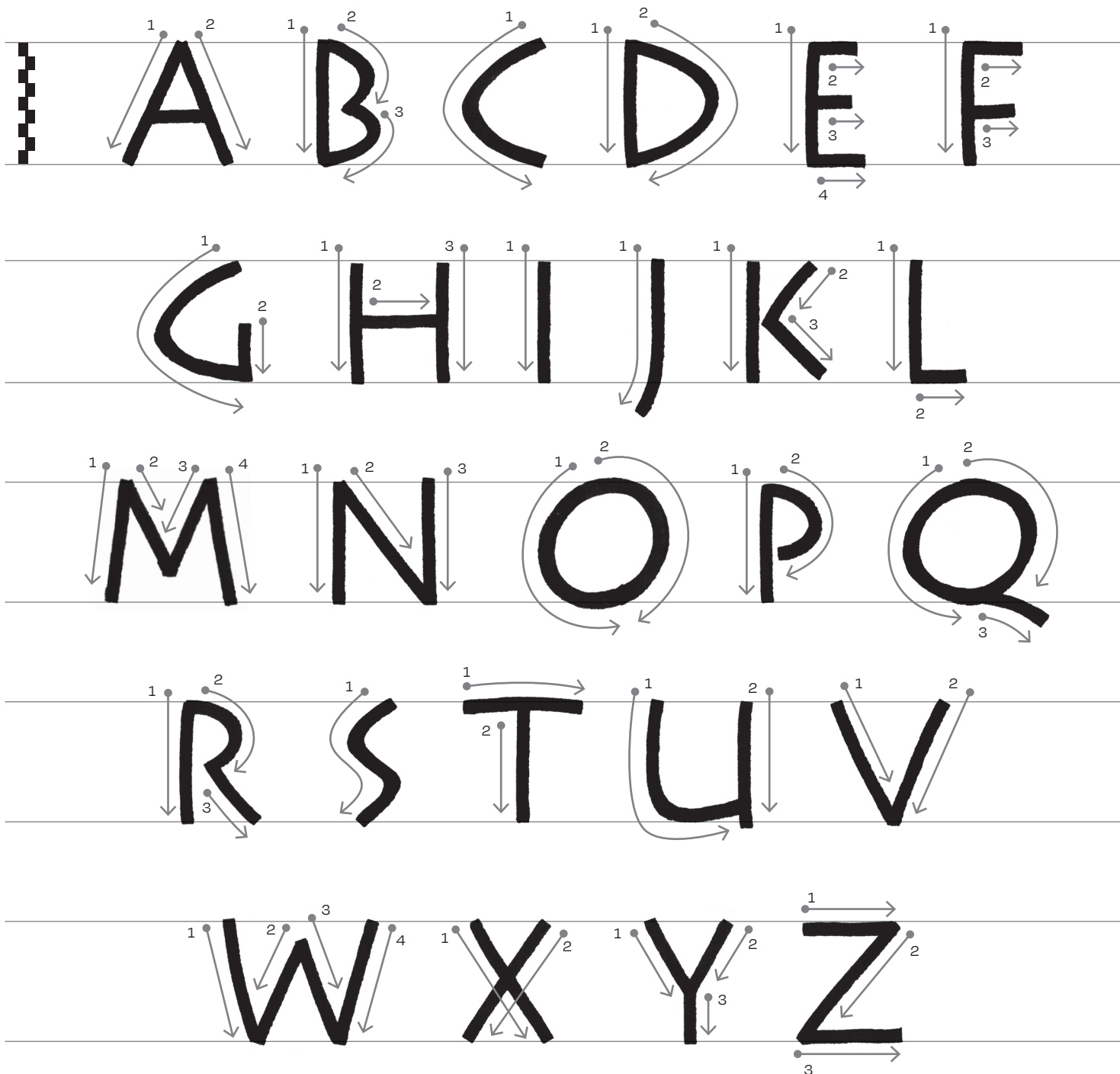
Speedball® A-Series

Notes

A-1 size nib has been used for this example, the letter height is approximately 9 nibs. For heavier letters try smaller nib height instead. For an alternate style, change all the curves in the rounded letters (**B C D** etc.) into angles.

Informal capitals

These capitals are inspired by a typeface called Lithos designed by Carol Twombly. These capitals are directly informed by the ancient Greek letters found in engraved inscriptions in the south-east of Europe. These letters are monolinear and simpler than the Roman Capitals and retain a very peculiar look, especially in the rounded letters and in the typical shape of the **S**.



Treat every exemplar as a starting point for your own experiments, these are not dogmas but propositions.

All works herein © Sandro Bonomo. Print permitted only for personal use. Any other reproduction prohibited without written permission from the author.



For more calligraphy content follow:
[@sandro.bonomo](https://www.instagram.com/sandro.bonomo/) / [@speedball_calligraphy](https://www.instagram.com/speedball_calligraphy/)