

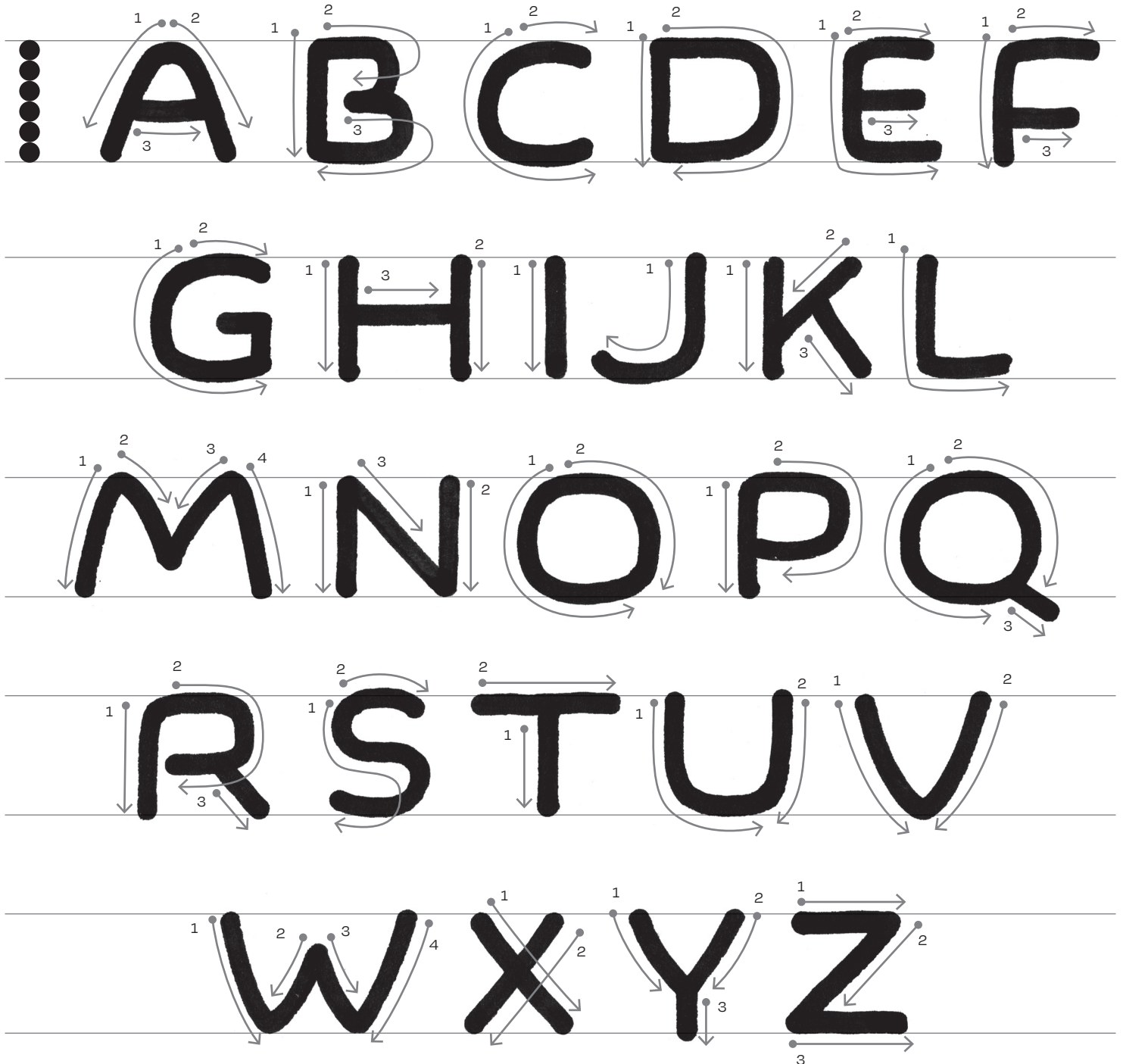
Speedball® B-Series

Informal capitals

Notes

B-0 size nib has been used for this example, the letter height is approximately 6 nibs. For lighter weights try smaller size nibs or a higher nib width, for heavier letters try smaller nib height instead. **P** bowl can be open like **R** or **B** and viceversa.

These informal capitals are inspired by a typeface called Forester, designed by Nick Sherman and published by Future Fonts. These letters are influenced by lettering found on signage in parks and tracks, but also has some resemblance to informal lettering found on old comic books. These letters does not follows classic Roman Capitals proportions, but instead they tend to a monospaced and uniformed width.



Treat every exemplar as a starting point for your own experiments, these are not dogmas but propositions.

All works herein © Sandro Bonomo. Print permitted only for personal use. Any other reproduction prohibited without written permission from the author.



For more calligraphy content follow:
[@sandro.bonomo](https://www.instagram.com/sandro.bonomo) / [@speedball_calligraphy](https://www.instagram.com/speedball_calligraphy)