

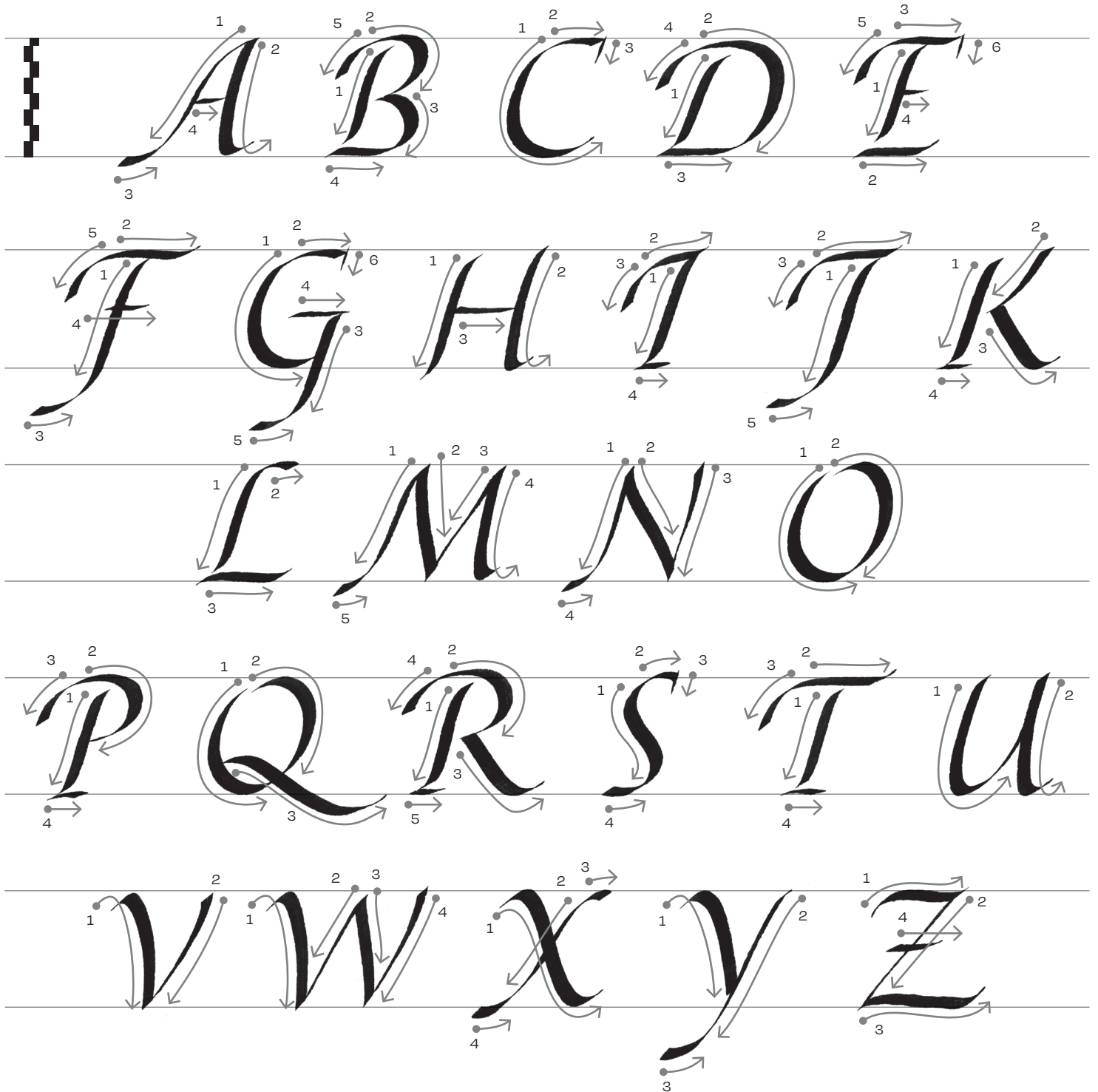
Speedball® C-Series

Slanted Italic uppercase

Notes

C-1 size nib has been used for this example, the letter height is approximately $7\frac{1}{2}$ nibs. The final stroke on the bottom of **A F G J M N X Y** can be done in a single stroke from top to bottom as shown in the videos, or in 2 disconnected strokes as shown here.

Italic is an extremely flexible script, adaptable to almost endless variations and personalizations. These capitals, called also "Swash Capitals", are the more decorative version of the simple ones and have a great potential for expressiveness. To keep a good balance of thickness between the strokes the pen angle of 45° should be measured in regard to the slant, not to the baseline



Treat every exemplar as a starting point for your own experiments, these are not dogmas but propositions.

All works herein © Sandro Bonomo. Print permitted only for personal use. Any other reproduction prohibited without written permission from the author.



For more calligraphy content follow:
[@sandro.bonomo](#) / [@speedball_calligraphy](#)