

METAL LEAF™

*Speedball.*





MONA LISA METAL LEAF™

1

GENUINE METAL LEAF™

Made of 23 Karat Gold, Sterling Silver and Genuine Copper, Speedball's® Genuine Metal Leaf allows artists to incorporate precious metals into any fine art, craft or home décor project and create stunning and unique effects.

	3.4" x 3.4" SHEETS	
#0010213	25	23K Gold
#001213B	500	23K Gold
#0010200	25	Sterling Silver
#001200B	500	Sterling Silver
#0010205	25	Genuine Copper
#001205B	500	Genuine Copper



1

2

COMPOSITION METAL LEAF™

Composition Leaf offers a similar working experience and look to that of Genuine Metal Leaf at a fraction of the price.

	5.5" x 5.5" SHEETS	
#0010204	25	Gold Composition
#0010202	500	Gold Composition
#0010206	25	Silver Aluminum
#0010203	500	Silver Aluminum



2



SIMPLE LEAF™

This transfer-style leaf is easier to handle and apply than traditional leaf, but delivers the same lustrous results. Ideal for use on flat surfaces, Mona Lisa Simple Leaf™ is bonded with wax paper and adheres to only the areas to which it is applied directly, keeping excess leaf on the transfer paper and minimizing waste and cleanup.

	5.5" x 5.5" SHEETS	
3	#0010030	18 Gold
	#0010030B	300 Gold
4	#0010031	18 Silver
	#0010031B	300 Silver
5	#0010032	18 Copper
	#0010032B	300 Copper

6

METAL FLAKES™

Consisting of small pieces of Mona Lisa Metal Leaf of varying shapes and sizes, Mona Lisa Metal Flakes are ideal for use on textured surfaces.

#0010009	3g	Gold
#0010009B	3g (20 pkgs)	Gold
#0010010	3g	Silver
#0010010B	3g (20 pkgs)	Silver
#0010011	3g	Copper
#0010011B	3g (20 pkgs)	Copper
#0010012	3g	Mixed
#0010012B	3g (20 pkgs)	Mixed



6

## MONA LISA™ TOOLS & ACCESSORIES

### GILDING GLOVES

Cotton gloves recommended for use with any metal leafing project. One size fits most. White.

#0010240 1 pair

#0010240B 12 pairs

7

### RED BASECOAT

Adds a deep red luster to metal leaf projects while sealing the project prior to leafing. Water-based. Cleans up easily with soap and water.

#0010216 2 OZ / 59.1 ML

#0010316 32 OZ / 946 ML

ALL OF OUR MONA LISA™ FLUIDS ARE  
AP CERTIFIED



7

8

### ANTIQUING GLAZE

Water-based glaze, specifically formulated for metal leafing. Deep umber hue gives projects an aged look. Cleans up easily with soap and water.

#0010215 2 OZ / 59.1 ML

#0010415 32 OZ / 946 ML



8

## MONA LISA™ SEALERS

9

### WATER-BASED SEALER

Specifically formulated for protecting metal leaf projects from tarnishing. Cleans up easily with soap and water.

#0010218 2 OZ / 59.1 ML

#0010517Q 32 OZ / 946 ML



9

## MONA LISA™ ADHESIVES

### ADHESIVE PEN

Use for embellishments, fine detail, signatures, calligraphy, lace design or ornaments.

#0010035 Carded

10

### BRUSH-ON ADHESIVE

Water-based, brush-on adhesive for use with wide range of metal leaf, home décor, arts and crafts projects. Cleans up easily with soap and water.

#0010210 2 OZ / 59.1 ML

#0010217 32 OZ / 946 ML



10

11

### EXTRA THICK ADHESIVE

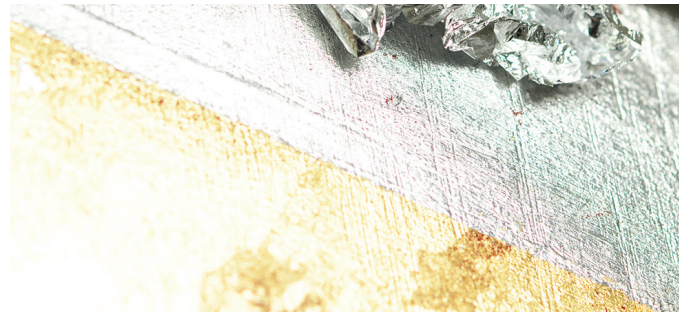
Water-based, brush-on adhesive that is excellent for metal leafing onto porous surfaces or stenciling projects. Cleans up easily with soap and water.

#0010207 2 OZ / 59.1 ML

#0010207Q 32 OZ / 946 ML



11



## METAL LEAF™ KITS



12



13



14

12

### MONA LISA ADHESIVE PEN & SILVER SIMPLE LEAF KIT

Includes (1) Mona Lisa Adhesive Pen and (6) sheets of Simple Leaf (Silver).

#0010034

### MONA LISA ADHESIVE PEN & GOLD SIMPLE LEAF KIT

Includes (1) Mona Lisa Adhesive Pen and (6) sheets of Simple Leaf (Gold).

#0010033

13

### METAL LEAF STARTER KIT

Contains (6) sheets of Composition Metal Leaf™ (Gold), .25oz (7.3ml) Brush-on Adhesive, .25oz (7.3ml) Water-based Sealer, .25oz (7.3ml) Red Basecoat and .25oz (7.3ml) Antiquing Glaze. Also includes (1) Metal Leaf Instruction Guide.

#0012204

14

### GOLD LEAF KIT

Contains (25) sheets Composition Metal Leaf (Gold) and (1) 2oz (59.1ml) each of Brush-on Adhesive and Water-based Sealer. Also includes (1) Metal Leaf Instruction Guide.

#0010201